

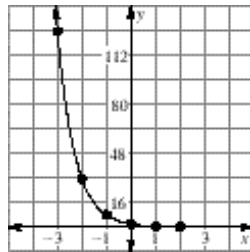
# Answer Key

## Practice B

1. \$11,550
2.  $\approx \$6848$
3.  $\approx \$4060.18$
4.  $\approx \$1853.60$
5. exponential growth, 1.25, 25% increase
6. exponential growth,  $\frac{6}{5}$ , 20% increase
7. exponential decay, 0.94, 6% decrease
8. exponential decay, 0.75, 25% decrease
9. exponential decay,  $\frac{4}{5}$ , 20% decrease
10. exponential growth, 1.05, 5% increase
11.  $\approx 284,963$
12.  $P = 1,400,000(0.993)^t, \approx 1,305,030.08$
13.  $\approx 7.0\%$

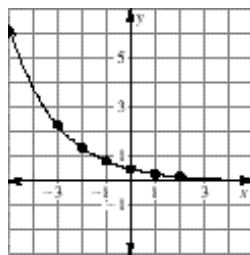
14.

$x$	-3	-2	-1	0	1	2
$y$	128	32	8	2	0.5	0.125



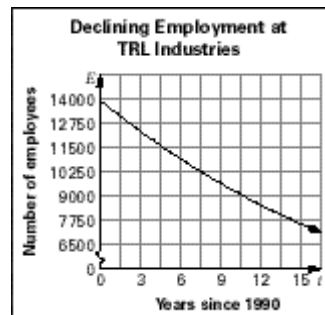
15.

$x$	-3	-2	-1	0	1	2
$y$	2.31	1.39	0.83	0.5	0.3	0.18



16. 14,000,  $\approx 13,400$ ,  $\approx 12,902$ ,  $\approx 12,386$ ,  
 $\approx 11,891$ ,  $\approx 11,415$ ,  $\approx 10,959$ ,  $\approx 10,520$ ,  
 $\approx 10,099$ ,  $\approx 9,696$ ,  $\approx 9,308$

17.



18.  $\approx 7589$